



National
Packaging Machinery

Strapping & Consumables

May 2025



PET Strapping

Polyester strapping can be tensioned to a higher percentage of its break strength than any other strapping material. It provides superior retained tension under hot, humid conditions and is more resistant to such environments than other plastic strapping. It also provides greater load stability during storage and shipping. Our strap is strong, yet resilient enough to perform smoothly and reliably in power strapping machines and hand tools. And it's more tear and snag resistant than other plastic strapping.



PETH92065406
PET Green Strapping
Embossed
9.2mm x 0.65mm x 3000m
Core: 406mm
Break Strain: 189kg ±10%



PETH127020406
PET Green Strapping
Embossed
12mm x 0.70mm x 2000m
Core: 406mm
Break Strain: 285kg ±10%



PETH155101100EX
PET Green Strapping
Embossed Extra Strength
15.5mm x 1.0mm x 1100m
Core: 406mm
Break Strain: 675kg ±10%



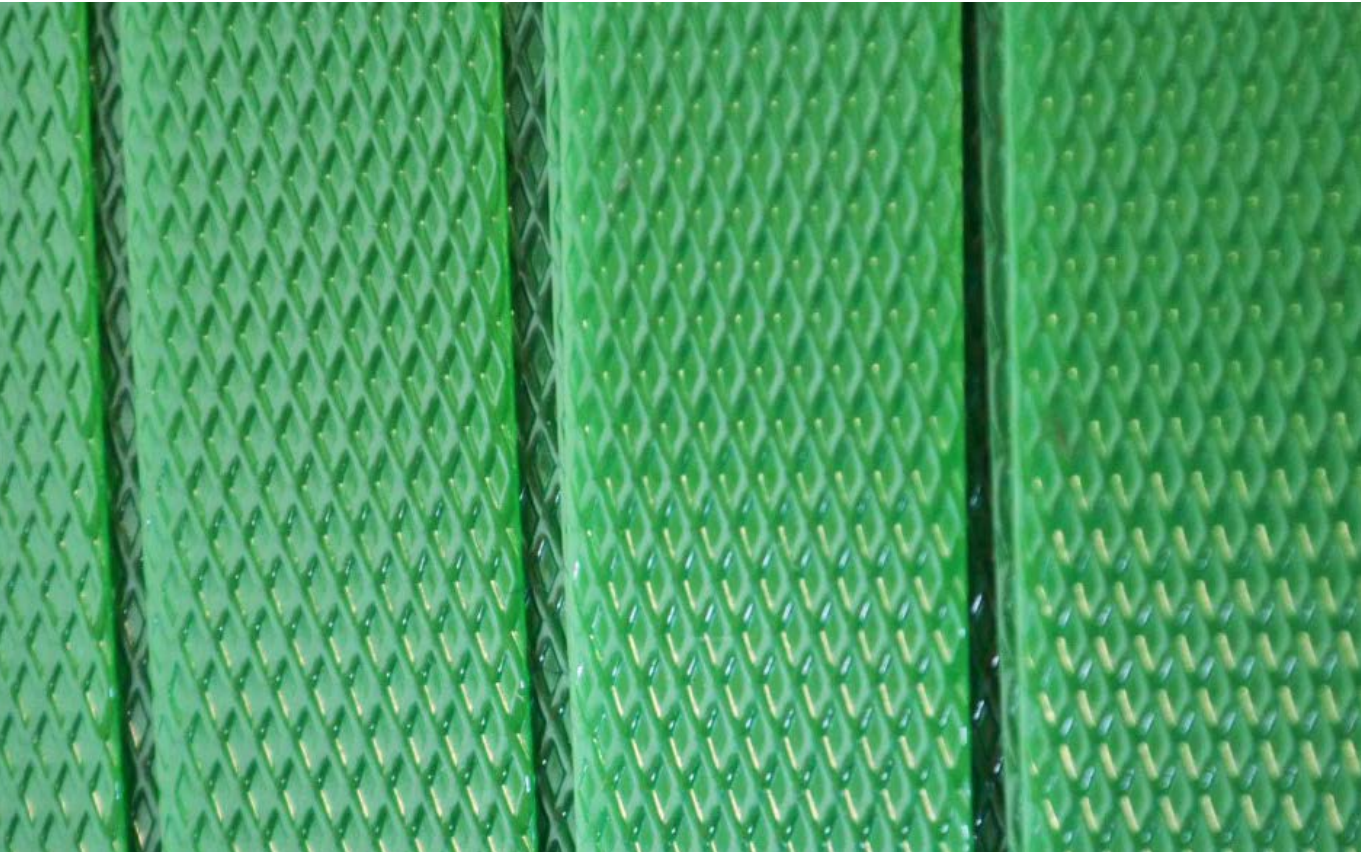
PETH155101220
PET Green Strapping
Embossed
15.5 x 1.0mm x 1220m
Core: 406mm
Break Strain: 540kg ±10%



PETH1901090406
PET Green Strapping
Embossed
18.5mm x 1.0mm x 950m
Core: 406mm
Break Strain: 675kg ±10%



PETH1901095406SM
PET Green Strapping
Smooth
18.5mm x 1.0mm x 950m
Core: 406mm
Break Strain: 770kg ±10%



PP Strapping

Stringent Japanese Quality Control System with exceptional tensile strength and banding.
Fully Auto Machine Strap: Used with fully or semi-automatic strapping machines.
Hand Straps comes in a handy dispenser box. Easy to use and tension by hand.
Can be sealed with poly buckles, wire buckles or metal seals.



PPH5047WH
PP White Strapping
5mm x 0.47mm x 7000m
Core: 200mm
Break Strain: 60kg ±10%



PPH9060CLR
PP Clear Strapping
9mm x 0.60mm x 4000m
Core: 200mm
Break Strain: 100kg ±10%



PPH12060BLU
PP Blue Strapping
12mm x 0.60mm x 3000m
Core: 200mm
Break Strain: 140kg ±10%



PPH12060CLR
PP Clear Strapping
12mm x 0.60mm x 3000m
Core: 200mm
Break Strain: 140kg ±10%



PPH12065BLU
PP Blue Strapping
12mm x 0.65mm x 3000m
Core: 200mm
Break Strain: 140kg ±10%



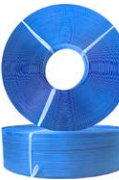
PPH12065CLR
PP Clear Strapping
12mm x 0.65mm x 3000m
Core: 200mm
Break Strain: 140kg ±10%



PPH12065406BLK
PP Black Strapping
12mm x 0.65mm x 3000m
Core: 406mm
Break Strain: 140kg ±10%



PPH12075406BLK
PP Black Strapping
12mm x 0.75mm x 2000m
Core: 406mm
Break Strain: 300kg ±10%



PPH19060150BLU
PP Blue Strapping
19mm x 0.60mm x 1000m
Core: 150mm
Break Strain: 180kg ±10%



PPH19070150BLK
Heavy Duty PP Black Strapping
19mm x 0.70mm x 1000m
Core: 150mm
Break Strain: 225kg ±10%



PPH19070406BLK
Heavy Duty PP Black Strapping
19mm x 0.70mm x 2000m
Core: 406mm
Break Strain: 225kg ±10%



Other sizes are available upon request to suit your machine requirements minimum quantity orders may apply

PP Strapping Buckles & Seals

We supply a wide range of poly buckles, wire buckles, and metal seals to suit all PP hand strapping applications. Designed for secure fastening, these consumables are essential for tensioned hand-strapped bundles and pallets.



WB-LD-12
Wire Buckle Light Duty

Ø2.5 x 12mm
1000 / Box



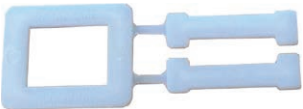
WB-HD-19
Wire Buckle Heavy Duty

Ø3.2 x 19mm
1000 / Box



B7613NA0012
Poly Buckle

12mm
1000 / Bag



B7613NA1519
Poly Buckle

15 - 19mm
1000 / Bag



MS-LD-12
Metal Seal Light Duty

0.5 x 12mm
1000 / Box



MS-LD-19
Metal Seal Light Duty

0.5 x 19mm
1000 / Box



MS-HD-19
Metal Seal Heavy Duty

0.6 x 19mm
1000 / Box



MS-EHD-19
Metal Seal Extra Heavy Duty

0.8 x 19mm
1000 / Box



Steel Strapping Seals

Our steel strapping seals include snap-on and thread-on pusher types, available in light to extra-heavy duty grades. Ideal for high-tension, industrial-grade steel strapping, they ensure durable closures for demanding loads and environments.



SO-12
Snap on Seal

0.6 x 12mm
1000 / Box



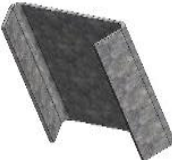
SO-16
Snap on Seal

0.6 x 16mm
1000 / Box



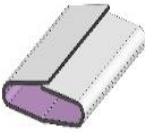
SO-19
Snap on Seal

0.6 x 19mm
1000 / Box



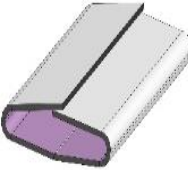
SO-32
Snap on Seal

0.8 x 32mm
250 / Box



TOP19x58
Thread On Pusher Seal

19 x 58 x 0.8mm
500 / Box



TOP-32x58
Thread On Pusher Seal

32 x 58 x 0.8mm
250 / Box



Notes

[illegible]



National
Packaging Machinery

Version 5.0